

PRESSURE REDUCING VALVE (HG) DIRECT TYPE

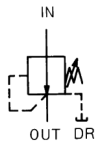


A pressure reducing valve reduces the pressure in a portion of the hydraulic circuit to a level lower than the main pressure. It maintains the pressure in the reduced pressure circuit at the specified level even if the main circuit pressure fluctuates.

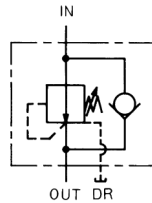
FEATURES

1. This valve allows the setting of a low pressure and stably maintains this pressure at the set level.
 2. The direct acting type valve ensures a quick response and generates virtually no surge pressure.
- For size 03 and larger valves, the mounting dimensions are the same as those of the balancing piston type pressure reducing valve.
 - For size 03 and larger valves, the drainage volume varies depending on the setting pressure.
 - Setting at 1 MPa: 1.5 L/min
 - Setting at 3.5 MPa: 3.5 L/min
 - If subplate SHG**-**T* is necessary, please order one separately.

● Without Check Valve



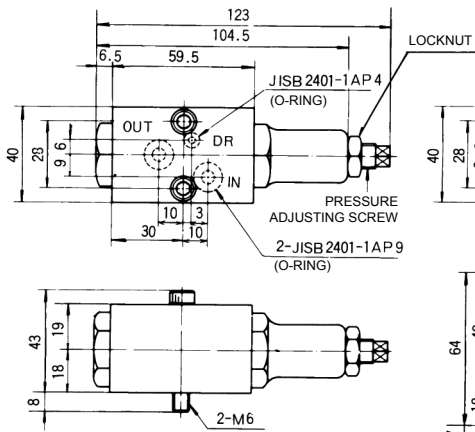
● With Check Valve



Nominal Size	Rated Flow (L/min)	Max. Operating Pressure (MPa)	Pressure Adjustment Range (MPa)	Model	
				Without Check Valve	With Check Valve
02	5	14	0.3 to 0.85	HG2-DG1-02A	HG2-DG1K-02A
			0.5 to 1.75	HG2-DG2-02A	HG2-DG2K-02A
			0.85 to 3.5	HG2-DG3-02A	HG2-DG3K-02A
			1.75 to 7	HG2-DG4-02A	HG2-DG4K-02A
03	20	7	0.3 to 0.85	HG1-DG1-03	HG1-DG1K-03
	30		0.5 to 1.75	HG1-DG2-03	HG1-DG2K-03
			0.85 to 3.5	HG1-DG3-03	HG1-DG3K-03
06	50		0.3 to 0.85	HG1-DG1-06	HG1-DG1K-06
	75		0.5 to 1.75	HG1-DG2-06	HG1-DG2K-06
			0.85 to 3.5	HG1-DG3-06	HG1-DG3K-06

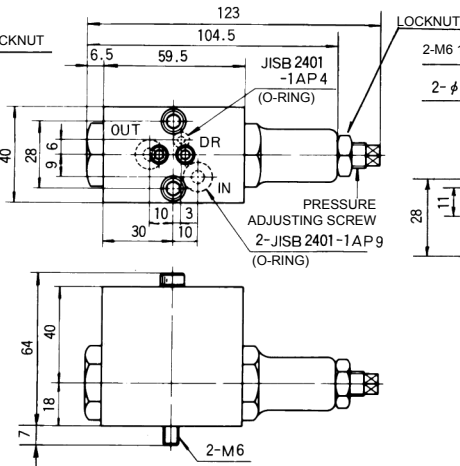
EXTERNAL DIMENSIONS

● HG2-DG*-02A



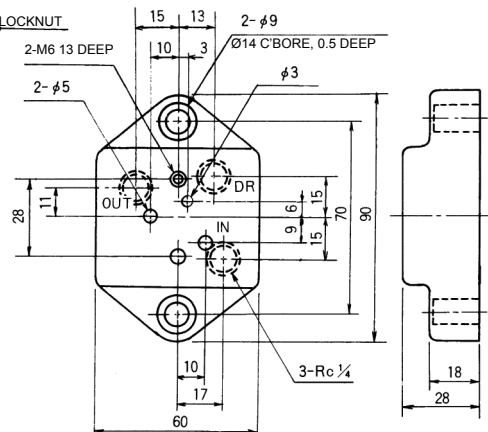
MASS: 0.7 kg

● HG2-DG*K-02A



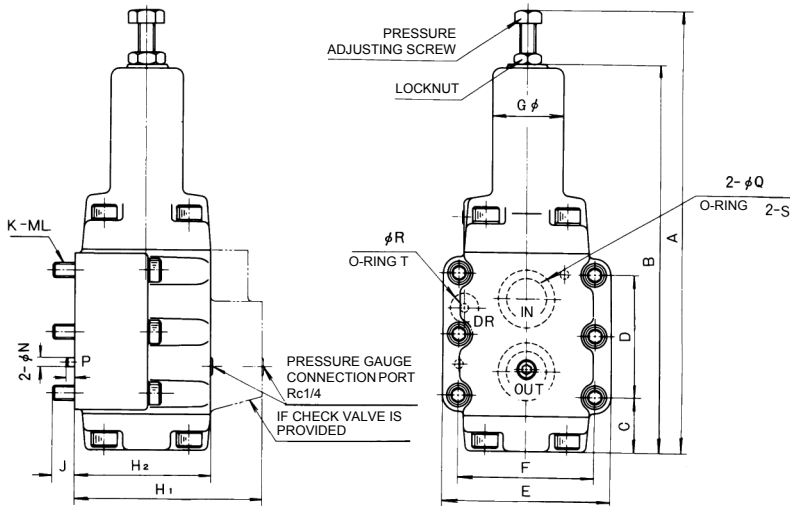
MASS: 1 kg

● SHG02-02T1



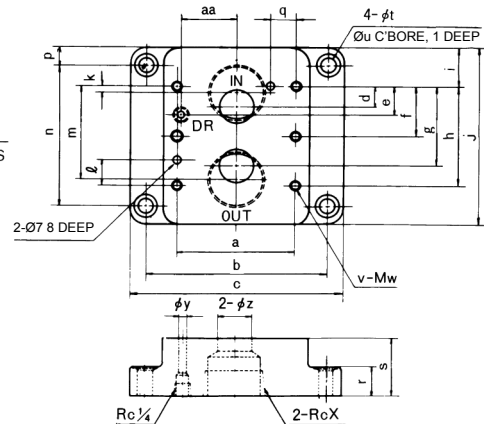
NOTE: FOR SHG02-**T3, REFER TO PAGE 304.

● HG1-DG*(K)-03, 06



NOTE: FOUR MOUNTING BOLTS ARE USED FOR SIZE 03 AND 06.

● SHG**-**T1



NOTE: FOR SHG**-**T3, REFER TO PAGE 304 AND PAGE 305.

Model	A	B	C	D	E	F	G	H ₁	H ₂	J	K	L	N	P	Q	R	S	T	Mass (kg)	
																			Without Check Valve	With Check Valve
HG1-DG*(K)-03	201	178	29	43	88	67	30	86	67	15	4	10	6	6	14	6	JISB2401-1AP21	JISB2401-1AP11	3.5	3.6
HG1-DG*(K)-06	230.2	204	30	60	102	80	43	98	75	15	4	10	6	6	22	6	JISB2401-1AG30	JISB2401-1AP16	5.4	6

Model	a	b	c	d	e	f	g	h	i	j	k	ℓ	m	n	p	q	r	s	t	u	v	w	x	y	z	aa
SHG03-03T1	67	106.4	130	7	21.5	-	36	43	11	65	5	11	38	43	11	14.5	11	25	11	17.5	4	10	3/8	5	14.5	25.5
SHG03-04T1	67	106.4	130	7	21.5	-	36	43	15.5	74	2.5	11	40.5	52	11	14.5	11	30	11	17.5	4	10	1/2	5	14.5	25.5
SHG06-06T1	80	124	146	11	21	-	49	60	18	96	6	16	54	60	18	16	11	35	11	17.5	4	10	3/4	6	19	34
SHG06-08T1	80	124	146	11	21	-	49	60	24	108	1	16	59	72	18	16	11	43	11	17.5	4	10	1	5	19	34

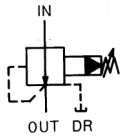
PRESSURE REDUCING VALVE (HG) BALANCING PISTON TYPE



A pressure reducing valve reduces the pressure in a portion of the hydraulic circuit to a level lower than the main pressure. It maintains the pressure in the reduced pressure circuit at the specified level even if the main circuit pressure fluctuates.

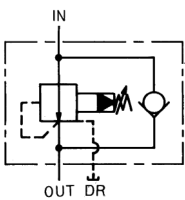
- Set the pressure in the reduced pressure circuit to a level at least 0.7 MPa lower than the main circuit pressure.
- Return the drainage (DR) directly to the reservoir independently since the drainage volume is approximately 0.8 to 1.2 L/min.
- If subplate SHG**-**T* is necessary, please order one separately.

● Without Check Valve



Nominal Size	Rated Flow (L/min)	Max. Operating Pressure (MPa)	Pressure Adjustment Range (MPa)	Model	
				Thread-connection Type	Gasket-connection Type
03	35	21	0.7 to 7	HG3-BT1-03	HG3-BG1-03
			3.5 to 14	HG3-BT2-03	HG3-BG2-03
			10.5 to 21	HG3-BT3-03	HG3-BG3-03
06	120		0.7 to 7	HG3-BT1-06	HG3-BG1-06
			3.5 to 14	HG3-BT2-06	HG3-BG2-06
			10.5 to 21	HG3-BT3-06	HG3-BG3-06

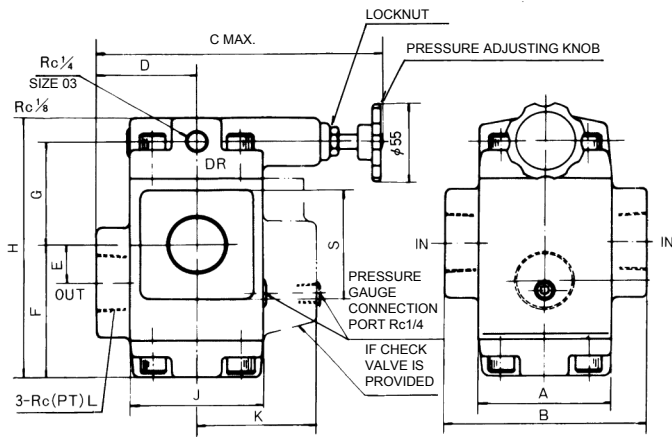
● With Check Valve



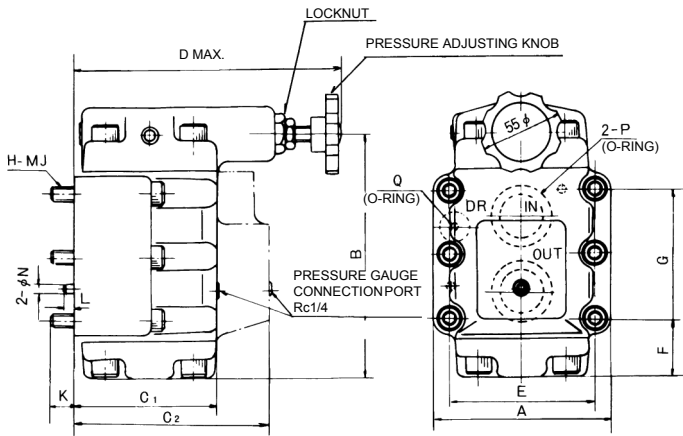
Nominal Size	Rated Flow (L/min)	Max. Operating Pressure (MPa)	Pressure Adjustment Range (MPa)	Model	
				Thread-connection Type	Gasket-connection Type
03	35	21	0.7 to 7	HG3-BT1K-03	HG3-BG1K-03
			3.5 to 14	HG3-BT2K-03	HG3-BG2K-03
			10.5 to 21	HG3-BT3K-03	HG3-BG3K-03
06	120		0.7 to 7	HG3-BT1K-06	HG3-BG1K-06
			3.5 to 14	HG3-BT2K-06	HG3-BG2K-06
			10.5 to 21	HG3-BT3K-06	HG3-BG3K-06

EXTERNAL DIMENSIONS

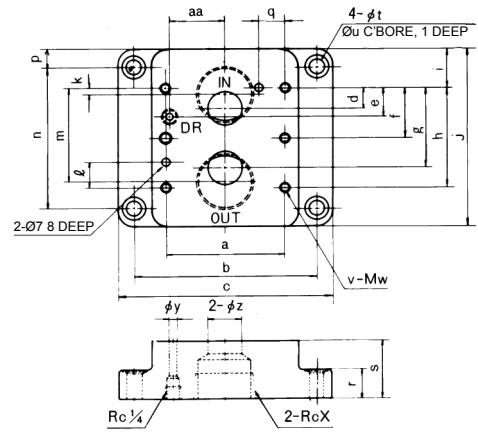
● HG3-BT*(K)-**



● HG3-BG*(K)-**



● SHG**_**T1



NOTE: FOR SHG**_**T3, REFER TO PAGE 304 AND PAGE 305.

Model	A	B	C	D	E	F	G	H	J	K	L	S	Mass (kg)	
													Without Check Valve	With Check Valve
HG3-BT*(K)-03	62	96	158	48	17	59	49	124	62	50	Rc(PT) ³ / ₈	54	4.7	5
HG3-BT*(K)-06	70	110	161	54	21.5	71.5	53.5	141	70	63	Rc(PT) ³ / ₄	58	6	6.5

Model	A	B	C1	C2	D	E	F	G	H	J	K	L	N	P	Q	Mass (kg)	
																Without Check Valve	With Check Valve
HG3-BG*(K)-03	88	108	67	86	146	67	29	43	4	10	15	6	6	JIS B2401-1AP21	JIS B2401-1AP11	4.5	5.0
HG3-BG*(K)-06	102	125	75	98	147	80	30	60	4	10	16	6	6	JIS B2401-1AG30	JIS B2401-1AP16	6.7	7.5

Model	a	b	c	d	e	f	g	h	i	j	k	ℓ	m	n	p	q	r	s	t	u	v	w	x	y	z	aa
SHG03-03T1	67	106.4	130	7	21.5	-	36	43	11	65	5	11	38	43	11	14.5	11	25	11	17.5	4	10	³ / ₈	5	14.5	25.5
SHG03-04T1	67	106.4	130	7	21.5	-	36	43	15.5	74	2.5	11	40.5	52	11	14.5	11	30	11	17.5	4	10	¹ / ₂	5	14.5	25.5
SHG06-06T1	80	124	146	11	21	-	49	60	18	96	6	16	54	60	18	16	11	35	11	17.5	4	10	³ / ₄	6	19	34
SHG06-08T1	80	124	146	11	21	-	49	60	24	108	1	16	59	72	18	16	11	43	11	17.5	4	10	1	5	19	34